

Low pressure cylinders up to 76kPa (7.6m) or open vented

Medium Pressure cylinders up to 120kPa (12m)

Superheat copper barrel cylinders are made in sizes from 10 to 800 litres capacity



| Low Pressure (open vent or 76kPa) | Open vent Wetback (dual) | Medium Pressure (120kPa) | LITRES | DIAMETER | HEIGHT | ELEMENT |
|-----------------------------------|--------------------------|--------------------------|--------------|----------|--------|---------|
| US10300 | | | 10 undersink | 300 | 360 | 1 |
| US16300 | | | 16 undersink | 300 | 500 | 1 |
| US25370 | | MG25370 | 25 undersink | 370 | 500 | 2 |
| US40460 | | MG40460 | 40 undersink | 460 | 500 | 2 |
| E45460TWIN | | MG45460 | 45 | 460 | 600 | 2 |
| E65460TWIN | | MG65460 | 65 | 460 | 800 | 2 |
| E90460TWIN | WB90460 | MG90460 | 90 | 460 | 1040 | 2 |
| E90540TWIN | WB90540 | MG90540 | 90 | 540 | 780 | 2 |
| E135510TRIPLE | WB135510 | MG135510 | 135 | 510 | 1190 | 2 |
| E135540TRIPLE | WB135540 | MG135540 | 135 | 540 | 1090 | 2 |
| E135560TRIPLE | WB135560 | MG135560 | 135 | 560 | 990 | 2 |
| E135610TRIPLE | WB135610 | MG135610 | 135 | 610 | 840 | 2 |
| E180540TRIPLE | WB180540 | MG180540 | 180 | 540 | 1410 | 2 |
| E180560TRIPLE | WB180560 | MG180560 | 180 | 560 | 1240 | 2 |
| E180610TRIPLE | WB180610 | MG180610 | 180 | 610 | 1090 | 2 |
| E180710TRIPLE | WB180710 | MG180710 | 180 | 710 | 840 | 2 |
| E225560TRIPLE | WB225560 | MG225560 | 225 | 560 | 1540 | 3 |
| E225610TRIPLE | WB225610 | MG225610 | 225 | 610 | 1320 | 3 |
| E270560TRIPLE | WB270560 | MG270560 | 270 | 560 | 1800 | 3 |
| E270610TRIPLE | WB270610 | MG270610 | 270 | 610 | 1530 | 3 |
| E270710TRIPLE | WB270710 | MG270710 | 270 | 710 | 1135 | 3 |
| E300560 | WB300560 | MG300560 | 300 | 560 | 1980 | 3 |
| E300610 | WB300610 | MG300610 | 300 | 610 | 1680 | 3 |
| E360610TRIPLE | WB360610 | MG360610 | 360 | 610 | 1990 | 4 |
| E360710TRIPLE | WB360710 | MG360710 | 360 | 710 | 1440 | 4 |
| E450710TWIN | WB450710 | MG450710 | 450 | 710 | 1740 | 4 |

Larger sizes up to 800 litres available with diameters up to 810mm

NOTE: SAFE TRAYS (CYLINDER TRAYS)

Please note that the NZ Building Code G12 AS2 (amendment 10, January 2017) requires safe trays below all cylinders (ref: G12, AS1, 6.11.3).

**For technical assistance contact us on +64 3 389 9500
Or email us info@superheat.nz**

LOW AND MEDIUM PRESSURE CYLINDER OPTIONS

With Wetback Coils

| CODE | DESCRIPTION |
|-----------|-------------------------------------|
| COIL25/05 | WETBACK - 25MM COIL 5 METRE LENGTH |
| COIL25/10 | WETBACK - 25MM COIL 10 METRE LENGTH |
| COIL25/15 | WETBACK - 25MM COIL 15 METRE LENGTH |
| COIL25/20 | WETBACK - 25MM COIL 20 METRE LENGTH |

With Direct Solar

| CODE | DESCRIPTION |
|-------|---|
| SOLAR | SOLAR COMPLETE (direct connections + 2 probe pockets) |

With Solar Coils including 2 probe pockets

| CODE | DESCRIPTION |
|---------------|--------------------------------------|
| COIL SOLAR 10 | SOLAR COIL 10 METRE OF 20MM DIAMETER |
| COIL SOLAR 15 | SOLAR COIL 15 METRE OF 20MM DIAMETER |
| COIL SOLAR 20 | SOLAR COIL 20 METRE OF 20MM DIAMETER |

With Indirect Mains Pressure Coil

| CODE | DESCRIPTION |
|------------|------------------------------------|
| COIL HP180 | INDIRECT MAINS PRESSURE COIL - 180 |
| COIL HP270 | INDIRECT MAINS PRESSURE COIL - 270 |
| COIL HP360 | INDIRECT MAINS PRESSURE COIL - 360 |

LOW AND MEDIUM PRESSURE CYLINDER ACCESSORIES

| CODE | DESCRIPTION |
|------------|--|
| L021 | LOW PRESSURE STEM THERMOSTAT 7" & 11" |
| L022 | EWT THERMOSTAT WITH THERMO CUTOUT (MANUAL RESET) |
| L023 | WETBACK CONSUMER ADJ THERMOSTAT |
| L025 | EWT THERMOSTAT AUTO RESET THERM CUTOUT |
| L026 | CONSUMER ADJ THERMOSTAT (0-100°C) |
| L027 | 7" STEM THERMOSTAT WITH THERMAL CUTOUT |
| EL1 | 1 kW ELEMENT |
| EL2 | 2 kW STD ELEMENT |
| EL3 | 3 kW STD ELEMENT |
| EL2-TITN | 2 kW TITANIUM ELEMENT |
| EL3-TITN | 3 kW TITANIUM ELEMENT |
| EL5 | 5 kW STD ELEMENT |
| L017 | GALVANISED TRAY 660mm DIAMETER |
| L018 | GALVANISED TRAY 800mm DIAMETER |
| L019 | QUICK RECOVERY ELEMENT & T/STAT (2 kW or 3kW) |
| TANKBCF | 40 LITRE COPPER HEADER TANK (Round) 460 x 300 HIGH, Including BALLCOCK & COPPER FLOAT |
| TANKSQUBCF | 20 LITRE COPPER HEADER TANK (Rectangle) 460 x 170 x 290 HIGH, Including BALLCOCK & COPPER FLOAT |
| TANKTRAY | RECTANGLE HEADER TRAY 560 x 220 (for TANKSQUBCF) |

Other square and rectangular trays can be made to order

LOW PRESSURE, STAINLESS STEEL BARREL, DIRECT WETBACK CYLINDERS (open vented)



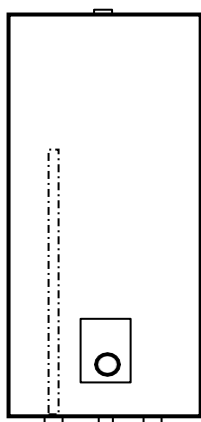
| CODE | LITRES | DIAMETER | HEIGHT | kW |
|---------|--------|----------|--------|----|
| WBSS195 | 195 | 560 | 1300 | 3 |
| WBSS250 | 250 | 580 | 1600 | 3 |
| WBSS280 | 280 | 580 | 1800 | 3 |
| WBSS300 | 300 | 580 | 1920 | 3 |

Other sizes with diameters 610, 710 & 810 also available, made to order.

DIRECT WETBACK CODE: WBSS

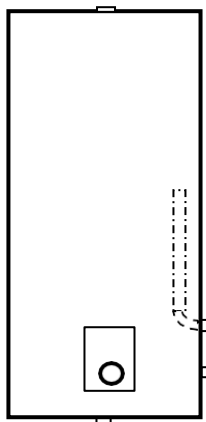
DIRECT WETBACK CYLINDERS MUST BE INSTALLED OPEN VENTED

NOTE: All wetback connections 25mm (1")



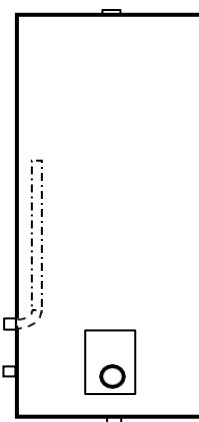
BOTTOM ENTRY

Bottom entry cold inlet



SIDE RIGHT SR

Side wetback with fixed riser
Bottom or side entry cold inlet



SIDE LEFT SL

Extra time is required for the manufacture of custom made cylinders

**For technical assistance contact us on +64 3 389 9500
Or email us info@superheat.nz**